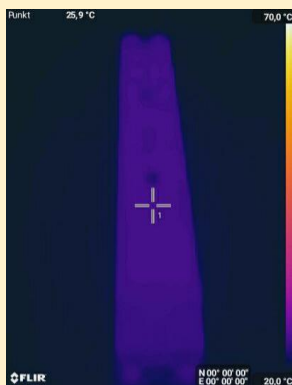


Thermal Management

The FLUXengine LED Module is optimized for easy thermal management utilizing standard t-slot profiles. For your evaluation we have gathered test data using 28 cm (11") aluminum profiles in a 20 °C (68 °F) environment at different loads.

For reference only. Values for your application might differ!

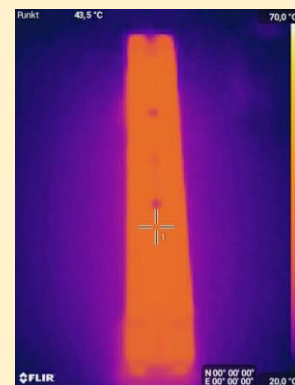
Heat sink: 280 x 40 x 40 mm t-slot profile



10 W: 26 °C



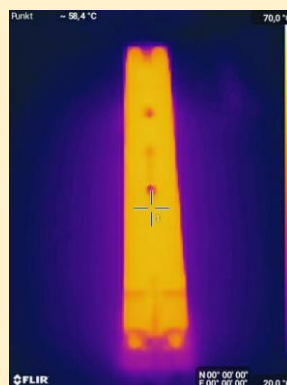
20 W: 36 °C



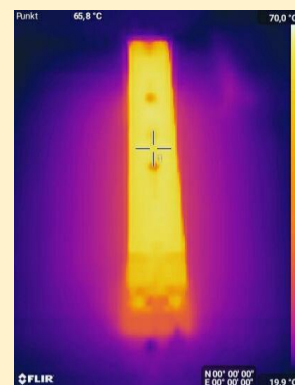
30 W: 44 °C



40 W: 53 °C

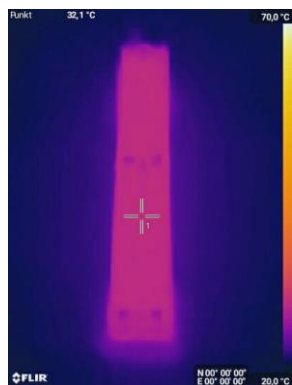


50 W: 60 °C

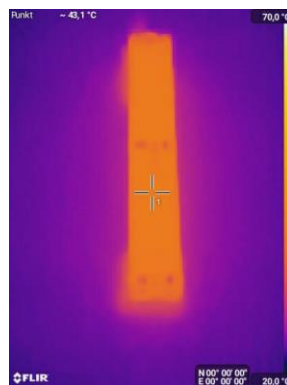


60 W: 66 °C

Heat sink: 280 x 40 x 40 mm t-slot profile



10 W: 32 °C

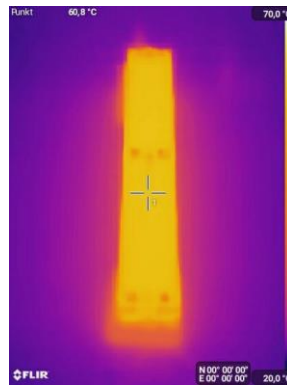


20 W: 43 °C

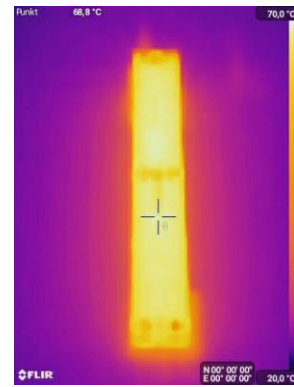


30 W: 51 °C

Page 1 continued



40 W: 61 °C

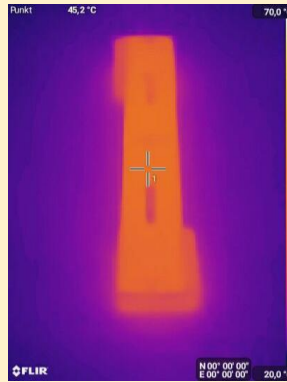


50 W: 70 °C

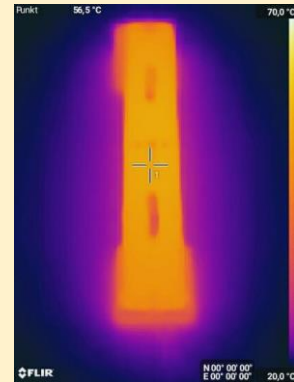
FLUXengine without heat sink



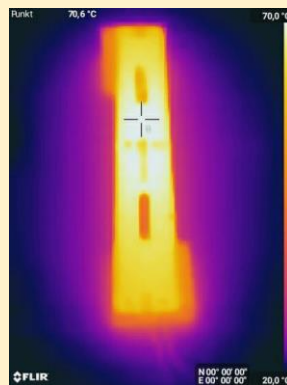
10 W: 39 °C



20 W: 46 °C



30 W: 57 °C



40 W: 71 °C